

PCN 08P3		
Project No P 6403(10)	County Pennington	Contract Amt \$23,381,920.13
Type of Work Grading, Drainage, Base Course, Asphalt Concrete Surfacing		
Contractor LOISEAU CONSTRUCTION, INC.		

The following change in plans and/or specifications for the subject project is hereby made:

Base Course Modified

Instruction: The plan quantity for Line No. 025P, Base Course will be reduced to zero and this quantity will be added to Line No. 100P, Base Course, Modified.

Reason: The gradation requirements are the same for both of these materials. The plan quantity for Base Course has been combined with the quantity for Base Course, Modified to simplify the material testing requirements.

Line No. 025 P	Base Course	-71,877.000 @ 35.000 / Ton
Line No. 100 P	Base Course, Modified	71,877.000 @ 35.000 / Ton

Construction Entrances

Instruction: The Contractor will install construction entrances according to the attachment titled SDDOT Construction Entrance, as directed by the Engineer. All costs will be included in Line No. 108P to install and remove materials to construct a construction entrance.

Reason: No construction entrances were provided in the plans. To minimize track-out, construction entrances were added to the contract. The cost to perform this work is comparable with similar work on Project No. P 6480(04), PCN 5777.

Line No. 108 P	Construction Entrance	3.000 @ 7,500.000 / Each	New
-----------------------	------------------------------	---------------------------------	------------

Erosion Blanket

Instruction: The Contractor will install erosion control blanket in ditches with steep grades, as directed by the Engineer.

Reason: The plans quantity was significantly underestimated for the project length and profile grade lines ranging from 4.5 to 11%. An additional 296.2 SqYd. was required to complete the stabilization in the first mile of the project. An estimated quantity of 3000 SqYd. has been added to the contract to be utilized in the remaining 9 miles of the project and will be adjusted on a subsequent CCO.

Line No. 084 P	Type 1 Erosion Control Blanket	3,296.200 @ 4.200 / SqYd
-----------------------	---------------------------------------	---------------------------------

Fiber Mulch

Instruction: The Contractor will apply fiber mulching on slopes that are not traversable with traditional farm equipment and in locations as directed by the Engineer. The fiber mulch will be on the approved products list or an approved equal. All costs to apply fiber mulch will be included in Line No. 107P. An estimated quantity of 5.0 Tons has been added to the contract and will be adjusted on a subsequent CCO.

Reason: The plans did not provide any fiber mulching for the slopes that could sustain vegetation but are not traversable using traditional farm equipment. The cost to perform this work is comparable to similar work on Project No. NH-PH 0385(5096, PCN 03BD.

Line No. 107 P	Fiber Mulching	5.000 @ 2,885.000 / Ton	New
-----------------------	-----------------------	--------------------------------	------------

PCN 08P3
 Project No P 6403(10) County Pennington Contract Amt \$23,381,920.13
 Type of Work Grading, Drainage, Base Course, Asphalt Concrete Surfacing
 Contractor LOISEAU CONSTRUCTION, INC.

Pipe Culvert Undercut

Instruction: The Contractor will perform pipe culvert undercut for cross pipes at Sta. 499+36, Sta. 510+48, and Sta. 527+65 as directed by the Engineer.

Reason: Pipe undercut was required due to saturated and unstable conditions at the locations noted above.

Line No. 034 P Pipe Culvert Undercut 45.200 @ 15.000 / CuYd

Remove & Reset Cattle Guard

Instruction: The Contractor will remove and reset the cattle guard from Sta. 336+60-40' Rt. to Sta. 336+60-75' Rt. All costs will be included in Line Nos. 105P and 106P to remove and reset cattle guard.

Reason: The existing cattle guard is being moved back to the ROW line so that the new ROW fence can be tied into it rather than installing a wire fence gate with concurrence from the U.S. Forest Service representatives. The cost to remove and reset the cattle guard is comparable with the same work performed on P 6480(04), PCN 5777.

Line No. 105 P Reset Cattle Guard 1.000 @ 3,575.000 / Each New
 Line No. 106 P Remove Cattle Guard for Reset 1.000 @ 1,925.000 / Each New

Revised Plan Sheets

Instruction: The Contractor will replace Plan Sheets 73, 77, and 332 with the updated attached Plan Sheets revised on 5-31-23 and add the attached Plan Sheet 334 created on 5-31-23.

Reason: Plan Sheet 73 was updated to add the details of the Landowner agreement for removing the building at Sta. 241+50 Rt.

Plan Sheets 77 and 332 changed Sta. 351+85 to Sta. 351+88 to match the Pipe Quantities Table on Plan Sheet 25.

Plan Sheet 334 was added to detail approach pipes at Sta. 424+88 Lt. and Sta. 442+79 Lt.

Line No	Std Bid Item No	Item Description	Qty As Now Ordered	Current Change in Qty	Unit Price	Unit	Current Change in Amt
025P	260E1010	Base Course	0.000	(71,877.000)	35.000	Ton	-2,515,695.00
034P	421E0100	Pipe Culvert Undercut	68.200	45.200	15.000	CuYd	678.00
084P	734E0101	Type 1 Erosion Control Blanket	3,796.200	3,296.200	4.200	SqYd	13,844.04
100P	260E1060	Base Course, Modified	74,270.000	71,877.000	35.000	Ton	2,515,695.00
105P	610E1000	Reset Cattle Guard	1.000	1.000	3,575.000	Each	3,575.00
106P	110E7600	Remove Cattle Guard for Reset	1.000	1.000	1,925.000	Each	1,925.00
107P	732E0200	Fiber Mulching	5.000	5.000	2,885.000	Ton	14,425.00
108P	900E1320	Construction Entrance	3.000	3.000	7,500.000	Each	22,500.00

Price Adjustments

Line #	Reason for Adjustment	Adjust %	Adjust Qty	Adjust Amt
100P	Failed gradation on #4 & #8	-14.0%	3,000.00	(14,700.00)
100P	Failed gradation on the #8 & #4 sieves	-4.0%	3,000.00	(4,200.00)

Total Quality Adjustments this CCO (18,900.00)

PCN 08P3

Project No P 6403(10)

County Pennington

Contract Amt \$23,381,920.13

Type of Work Grading, Drainage, Base Course, Asphalt Concrete Surfacing

Contractor LOISEAU CONSTRUCTION, INC.

Increase This Order	<u>\$2,572,642.04</u>
Decrease This Order	<u>(\$2,534,595.00)</u>
Net Change This Order	<u>\$38,047.04</u>
Net Change To Date	<u>(\$476,115.47)</u>

All standard specifications apply unless otherwise noted.

Additional substantial calendar days:

Additional field work calendar days:

Additional substantial working days:

Additional field work working days: 24.00

New substantial completion date:

New field work completion date:

The net change due to this CCO is an increase of \$38,047.04

RECEIVED
MAR 19 2024
RC REGION OFFICE

Prepared by Brenda Flottmeyer

Date 02/16/2024

Contractor Acceptance

Rapid City Area Engineer Approval

The changes contained in this construction change order are made in accordance with the provisions of the contract for subject project and when accepted by the Contractor and upon approval by the South Dakota Department of Transportation shall become a part of said contract.

On 3/19/24

By Laura B Klein

Title Contract Manager

On March 6, 2024

By Michael D Carlson

County Approval

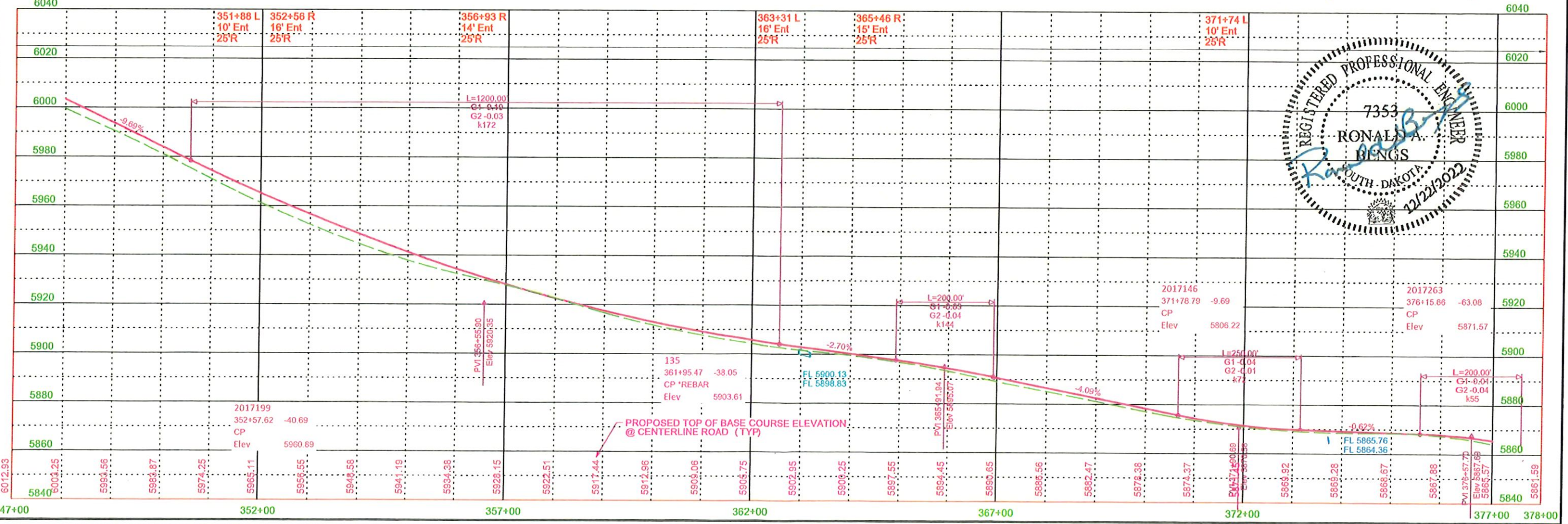
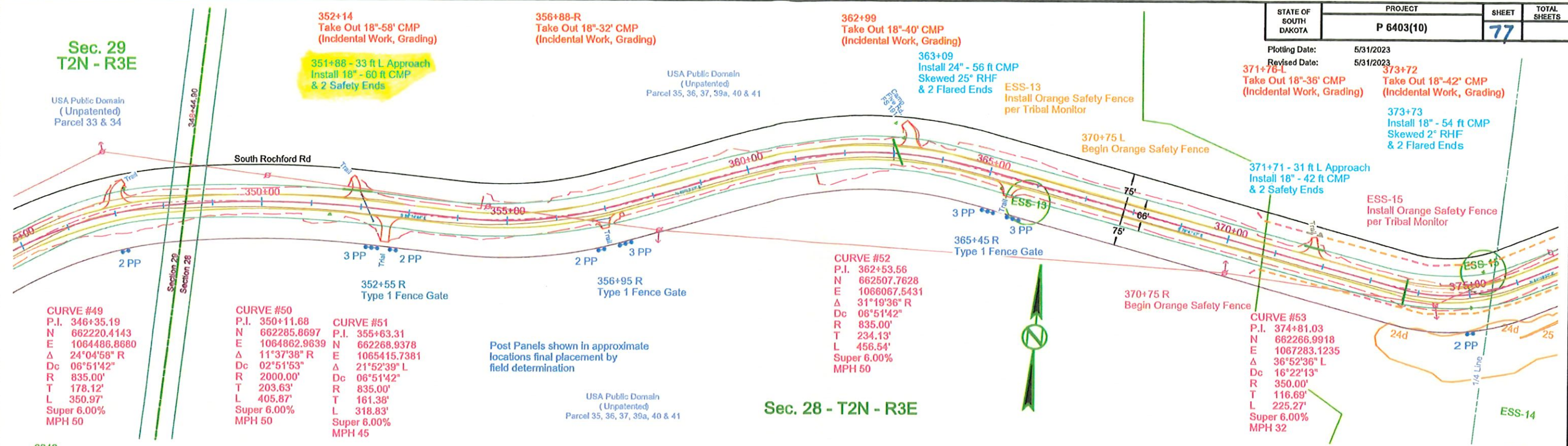
On 3/28/24

By Joel Mill

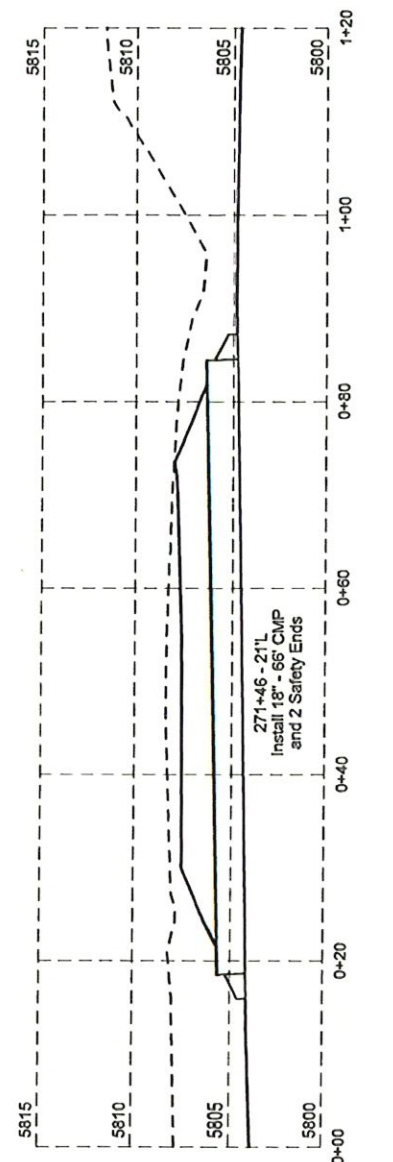
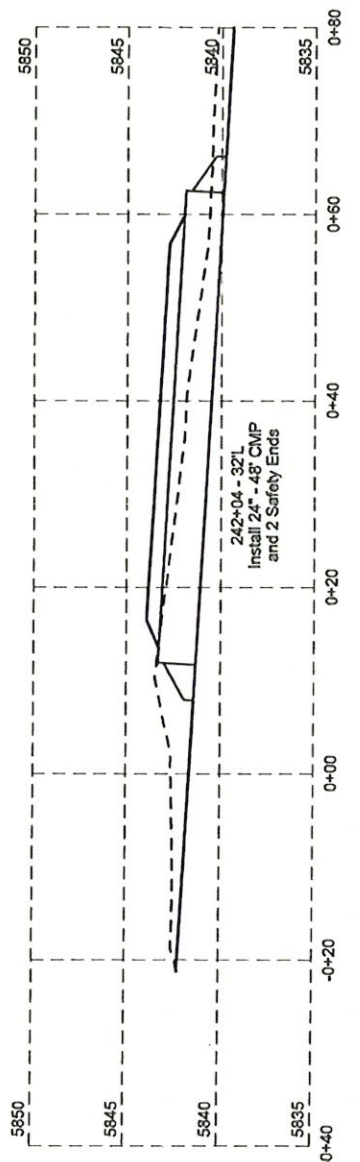
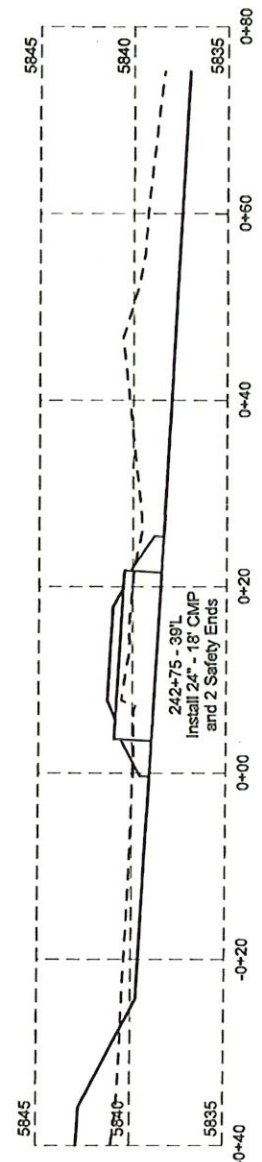
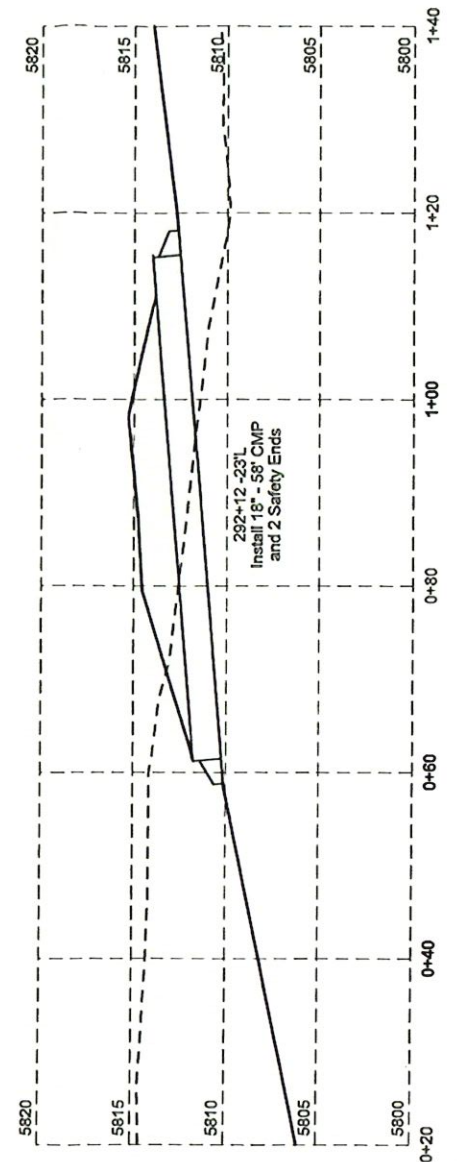
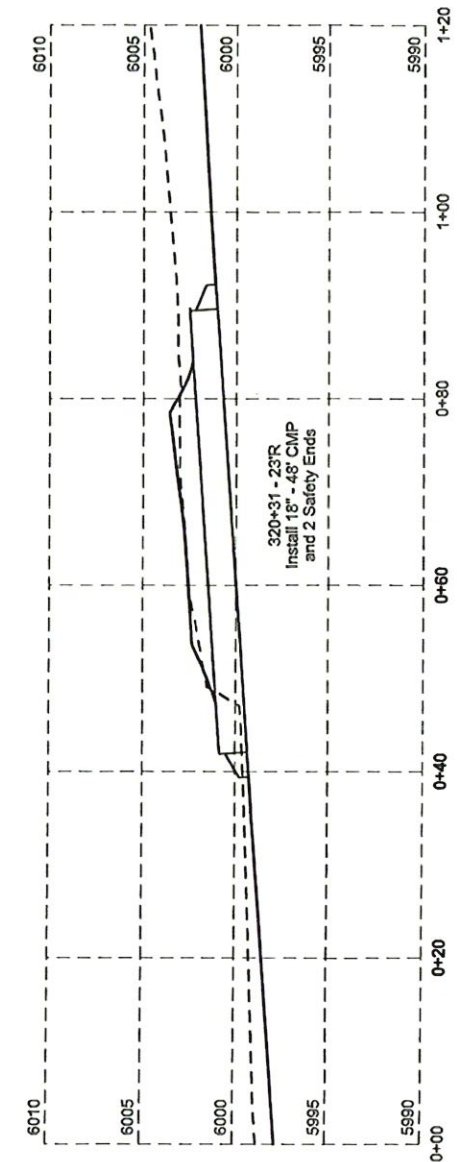
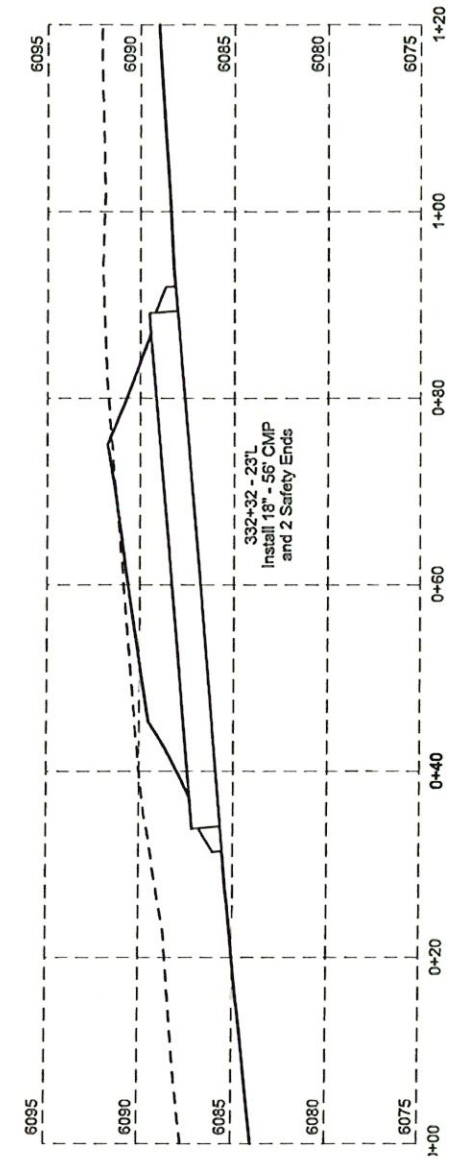
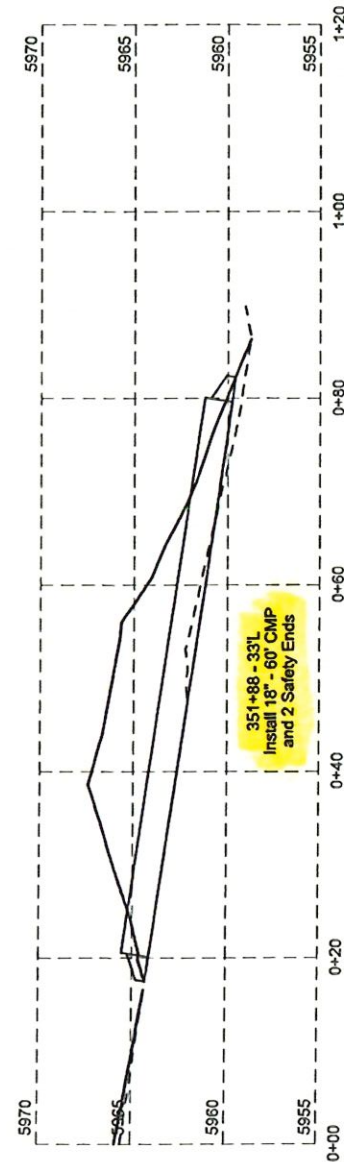
Plotting Date: 5/31/2023
 Revised Date: 5/31/2023

**Sec. 29
T2N - R3E**

Sec. 28 - T2N - R3E



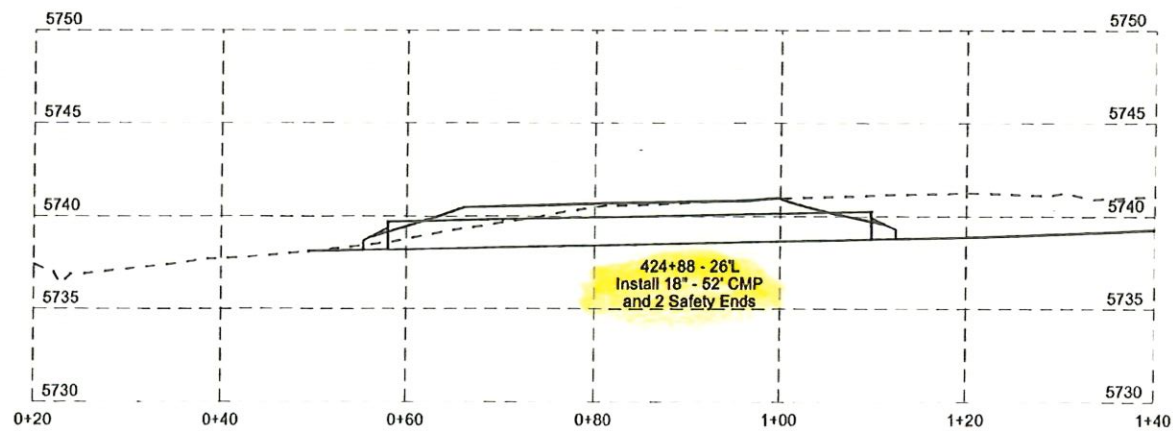
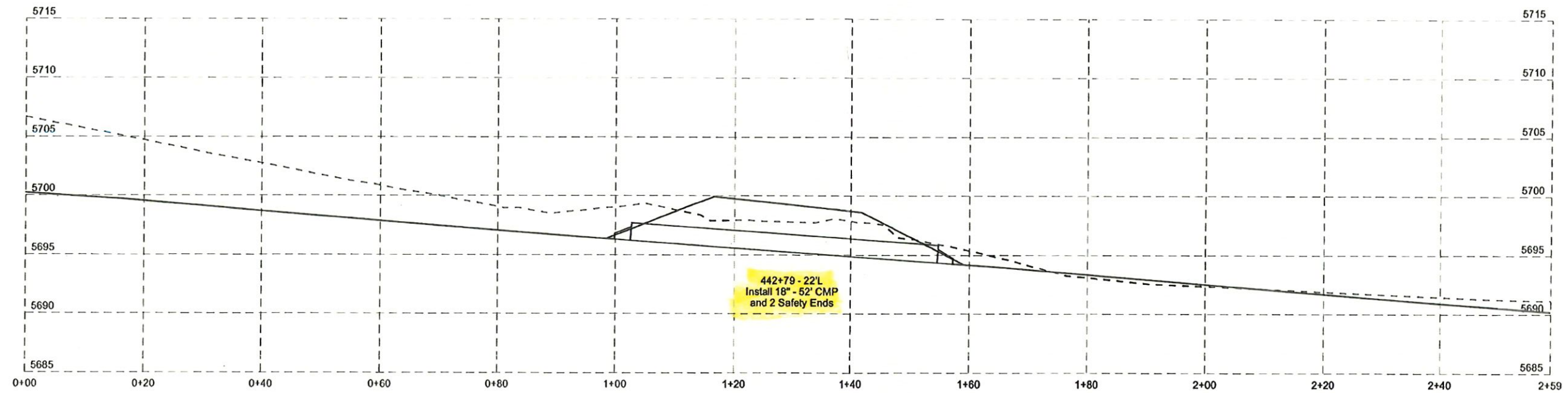
Plotting Date: 5/31/2023



STATE OF SOUTH DAKOTA	PROJECT	SHEET	TOTAL SHEETS
	P 6403(10)	337	

Plotting Date: 5/31/2023

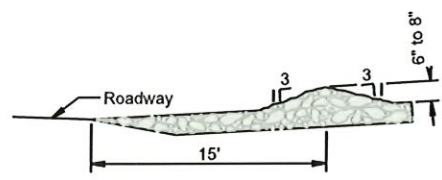
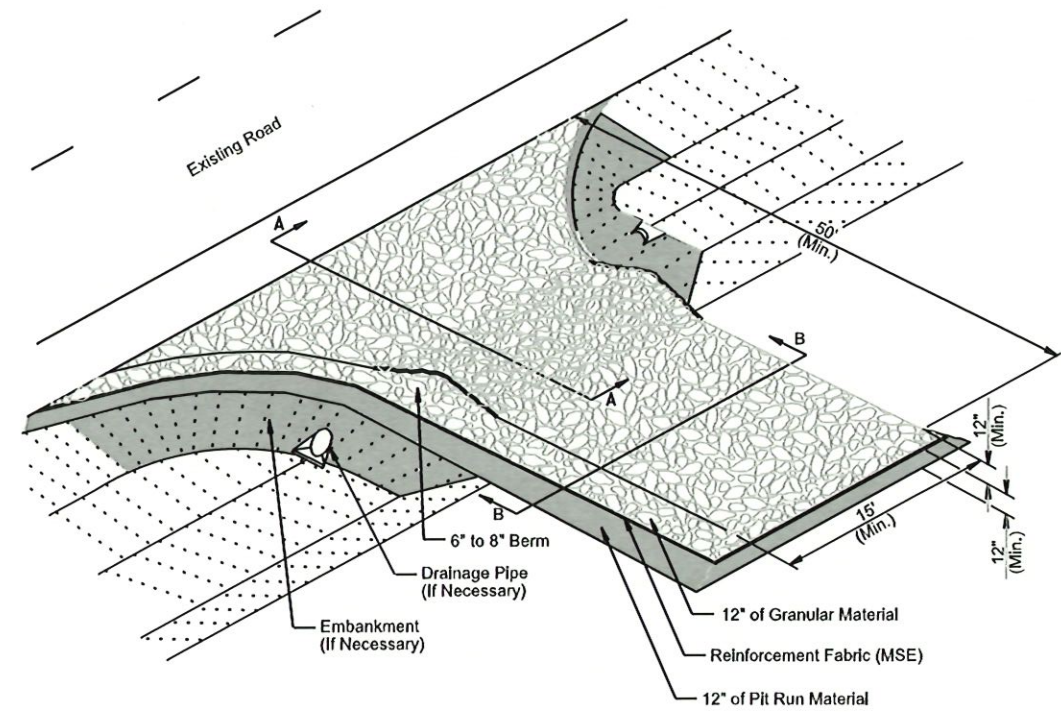
(MISSING FROM PLANS)



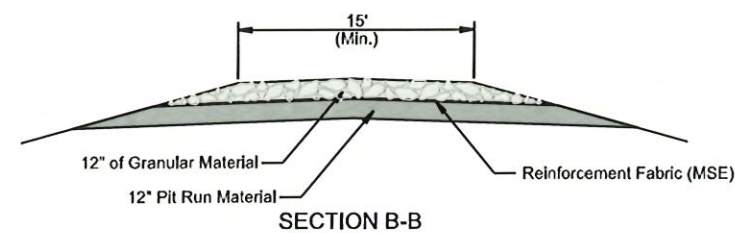
SDDOT CONSTRUCTION ENTRANCE

Plotting Date: 01/09/2024

Plot Scale: 1:300.216



SECTION A-A



SECTION B-B

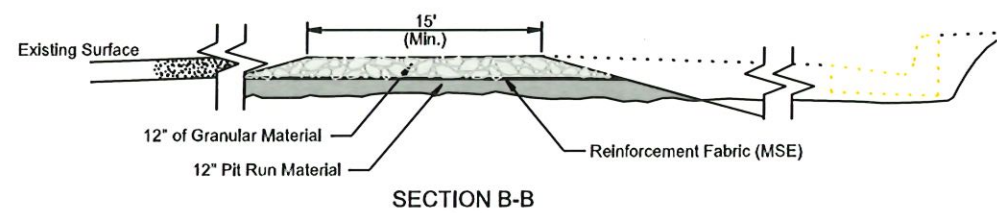
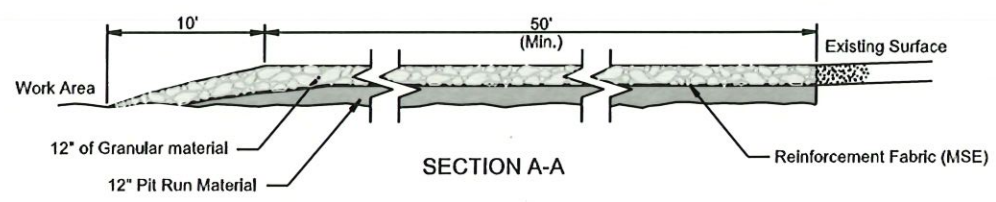
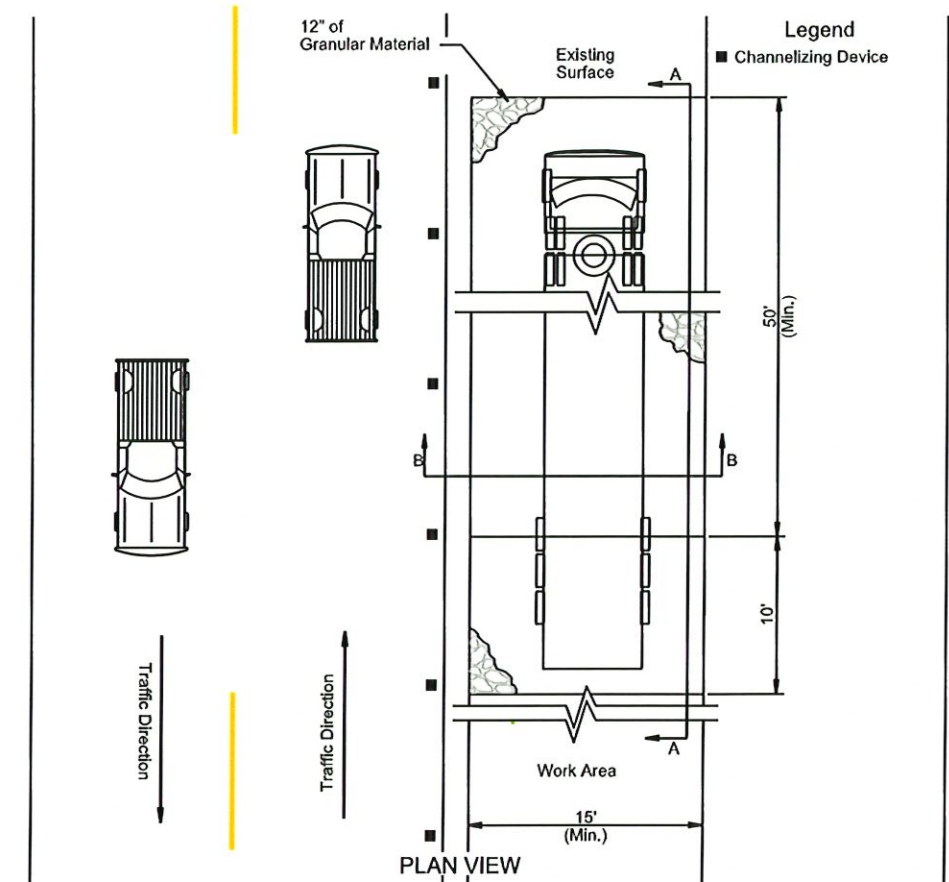
GENERAL NOTES:

If the grade of the entrance slopes down to the roadway, a berm of extra rock shall be used to prevent sediment or mud from being deposited on the roadway. See SECTION A-A.

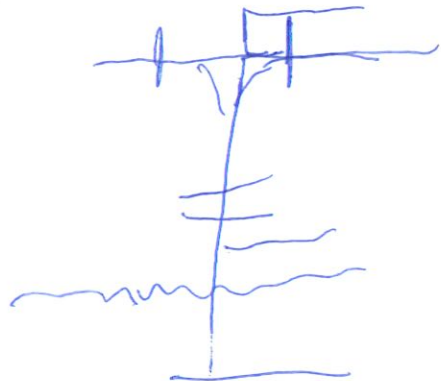
If a drainage pipe is necessary the size and type shall be determined by the Contractor to meet field conditions. All cost shall be incidental to the various bid items.

If embankment is necessary it shall be pit run material.

TRANSVERSE TO ROADWAY



PARALLEL TO ROADWAY



Plotted From: TRRC11638

File: ...\\AM\ECU\Stabilization.com